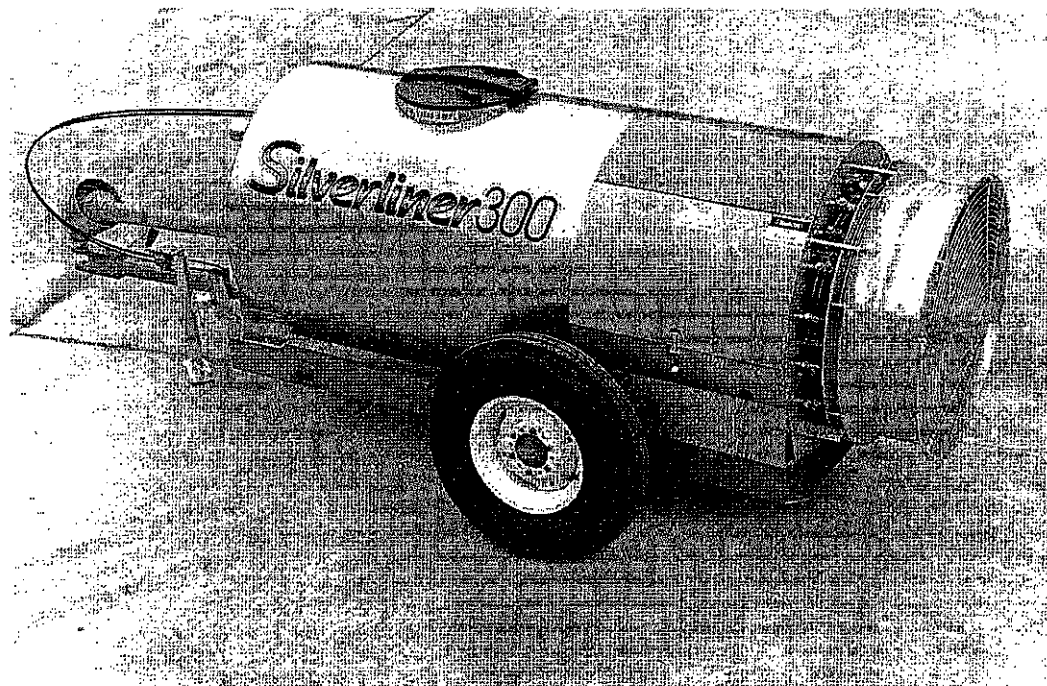


PARTS LISTS

SILVERLINER 300, 400, AND 500

CONTENTS

Figure 1	Frame Assembly	Page 2
Figure 2	Tank Assembly	Page 4
Figure 3	Drive Assembly	Page 6
Figure 4	Plumbing Assembly	Page 8
Figure 5	Rollover Valve Assembly	Page 10
Figure 6	Pressure Regulator Assembly	Page 11
Figure 7	Pump Assembly	Pages 12 & 13
Figure 8	Blower Assembly	Page 14



DURAND-WAYLAND, INC.

P.O. Box 1404
101 Durand Road
LaGrange, Georgia USA 30241-1404

TEL 706 882-8161
800 241-2308
FAX 706 882-0052

e-mail sales@durand-wayland.com

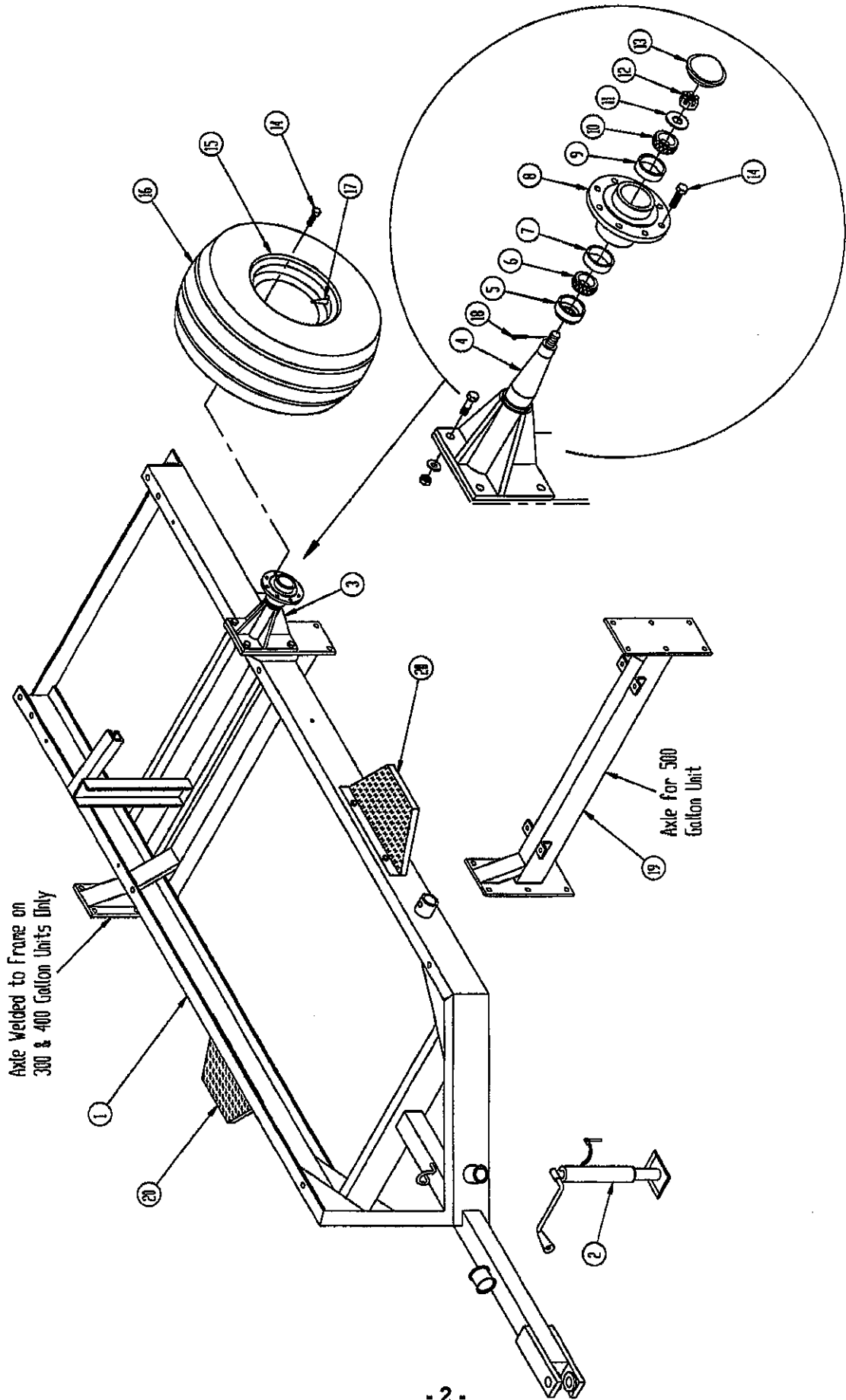


FIGURE 1 FRAME ASSEMBLY

FRAME ASSEMBLY SILVERLINER 300

ITEM	PART NO.	QTY	DESCRIPTION
1	5-7375	1	Frame
2	1-0724A	1	Jack
3	1-5101	2	Wheel Spindle Assembly
4	1-2158	2	Wheel Spindle Weldment
5	1-0728	2	Seal
6	1-0732	2	Inner Bearing
7	1-4073	2	Inner Cup
8	1-3330	2	Hub with Cup
9	1-4072	2	Outer Cup

ITEM	PART NO.	QTY	DESCRIPTION
10	1-0731	2	Outer Bearing
11	1-0733	2	Washer
12	1-2301	2	Nut
13	1-3331	2	Hub Cap
14	1-0736	16	Lug Bolt
15	1-0734	2	Wheel
16	1-0735	2	Tire
17	1-5386	2	Valve Stem
18	3-0886	2	Cotter Pin

FRAME ASSEMBLY SILVERLINER 400

ITEM	PART NO.	QTY	DESCRIPTION
1	5-8969	1	Frame
2	1-0724A	1	Jack
3	1-5101	2	Wheel Spindle Assembly
4	1-2158	2	Wheel Spindle Weldment
5	1-0728	2	Seal
6	1-0732	2	Inner Bearing
7	1-4073	2	Inner Cup
8	1-3330	2	Hub with Cup
9	1-4072	2	Outer Cup

ITEM	PART NO.	QTY	DESCRIPTION
10	1-0731	2	Outer Bearing
11	1-0733	2	Washer
12	1-2301	2	Nut
13	1-3331	2	Hub Cap
14	1-0736	16	Lug Bolt
15	1-5387	2	Wheel
16	1-9660	2	Tire
17	1-5386	2	Valve Stem
18	3-0886	2	Cotter Pin

FRAME ASSEMBLY SILVERLINER 500

ITEM	PART NO.	QTY	DESCRIPTION
1	8-0747	1	Frame
2	1-0724A	1	Jack
3	4-0954	2	Wheel Spindle Assembly
4	4-0758	2	Wheel Spindle Weldment
5	3-0882	2	Seal
6	3-0880	2	Inner Bearing
7	3-1023	2	Inner Cup
8	3-0888	2	Hub with Cup
9	3-1022	2	Outer Cup
10	1-0731	2	Outer Bearing

ITEM	PART NO.	QTY	DESCRIPTION
11	3-0884	2	Washer
12	3-0885	2	Nut
13	3-0879	2	Hub Cap
14	3-0887	16	Lug Bolt
15	3-0953	2	Wheel
16	3-0273	2	Tire
17	1-5386	2	Valve Stem
18	3-0886	2	Cotter Pin
19	4-3941	1	Axle
20	4-3940	2	Step Plate

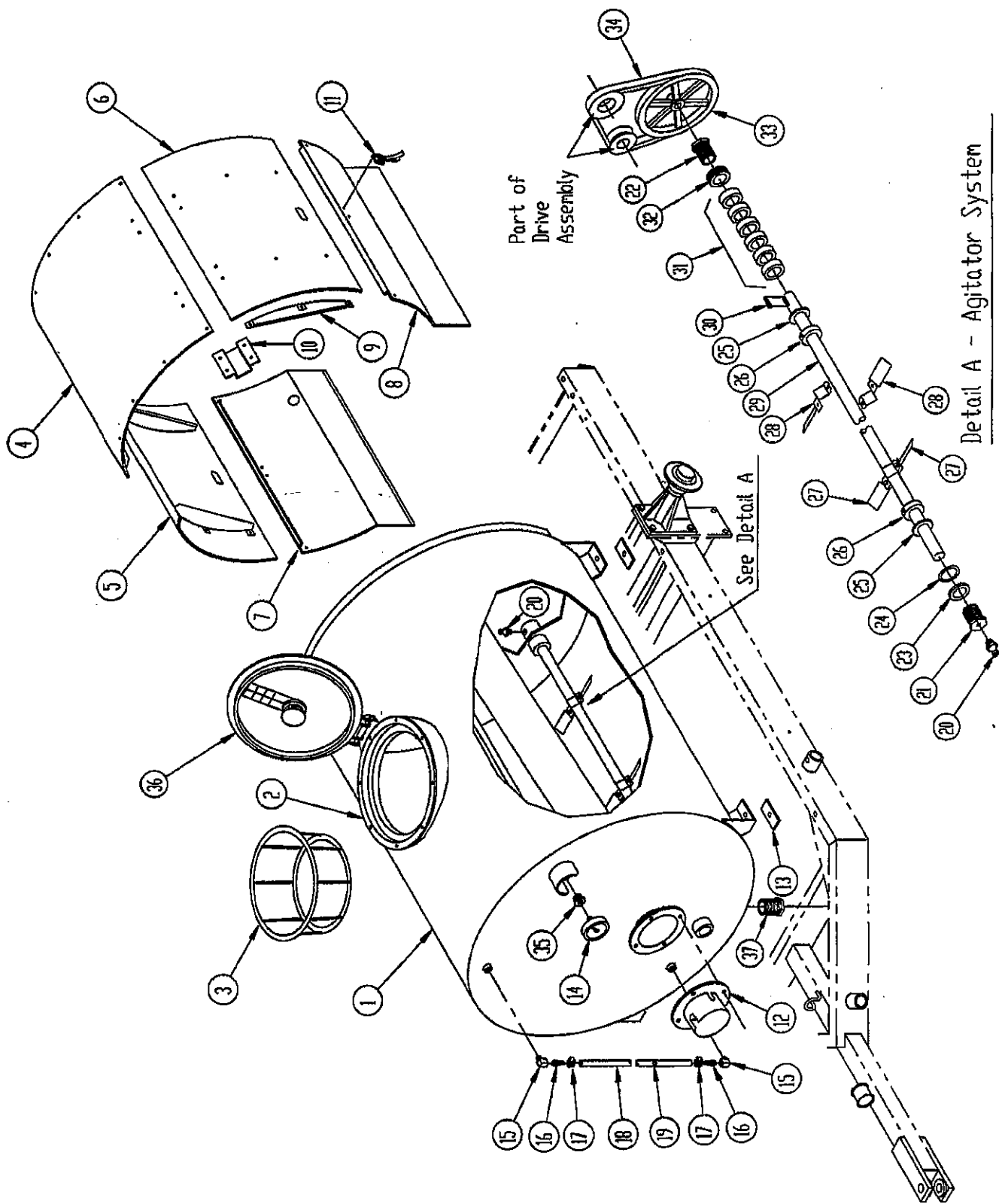


FIGURE 2 TANK/HOOD ASSEMBLY

TANK \ HOOD ASSEMBLY

ITEM	PART NO.	QTY	DESCRIPTION
1		1	See Below
2	6-3208	1	Tank Lid Assembly
3	3-4219	1	Wash Basket
4	5-7360	1	Top Hood
5	5-7361R	1	Right Side Hood
6	5-7361L	1	Left Side Hood
7	5-7358	1	Right Filler Panel
8	5-7359	1	Left Filler Panel
9	5-7362	4	Hood Brace
10	4-1875	2	Hood Hinge
11	3-4373	2	Hood Latch
12	5-7395	1	Bearing Plate Weldment
13	5-7416	4	Cushion Strip
14	3-2623	1	Pressure Gauge
15	3-8721	2	1/4" x 90° Street Ell
16	6-1084	2	1/4" NPT x 1/2" Hose Barb
17	3-0821	2	3/8" Hose Clamp
18	3-0019	4'	1/2" Clear Hose
19	6-1085	1	Sight Gauge Ball
20	1-8609	2	Lubrication Fitting
21	3-7011	1	Blind Packing Gland
22	3-7016	1	Right Hand Thru Packing Gland
23	3-7012	1	Washer
24	3-7013	1	O-Ring
25	3-6926	2	1" Nylon Flatwasher
26	4-3935	2	Set Collar
27	4-3937	4	Left (Front) Agitator Blade
28	4-3938	4	Right (Rear) Agitator Blade
29		1	See Below
30	1-8162	1	Key, 1/4" x 1 1/2"
31	3-7014	6	Packing Ring
32	3-7015	1	Grease Ring
33	6-0008	1	BK130 Sheave, 1" Bore
34	3-3170	1	B50 BELT
34A	3-4457	1	B48 BELT (used on earlier models)
35	3-4726	1	3/8" x 1/4" Hex Reducer
36	6-5027	1	Lid
36A	6-5028	1	Lid Gasket
36B	6-5029	1	Hinge Bar
36C	6-5030	1	Hinge Pin
37	6-3200	1	1 1/4 plug

6-3215

SILVERLINER 300

ITEM	PART NO.	QTY	DESCRIPTION
1	5-7349	1	Tank Weldment
29	5-7347	1	Agitator Shaft

SILVERLINER 400

ITEM	PART NO.	QTY	DESCRIPTION
1	5-8970	1	Tank Weldment
29	4-3936	1	Agitator Shaft

SILVERLINER 500

ITEM	PART NO.	QTY	DESCRIPTION
1	8-0729	1	Tank Weldment

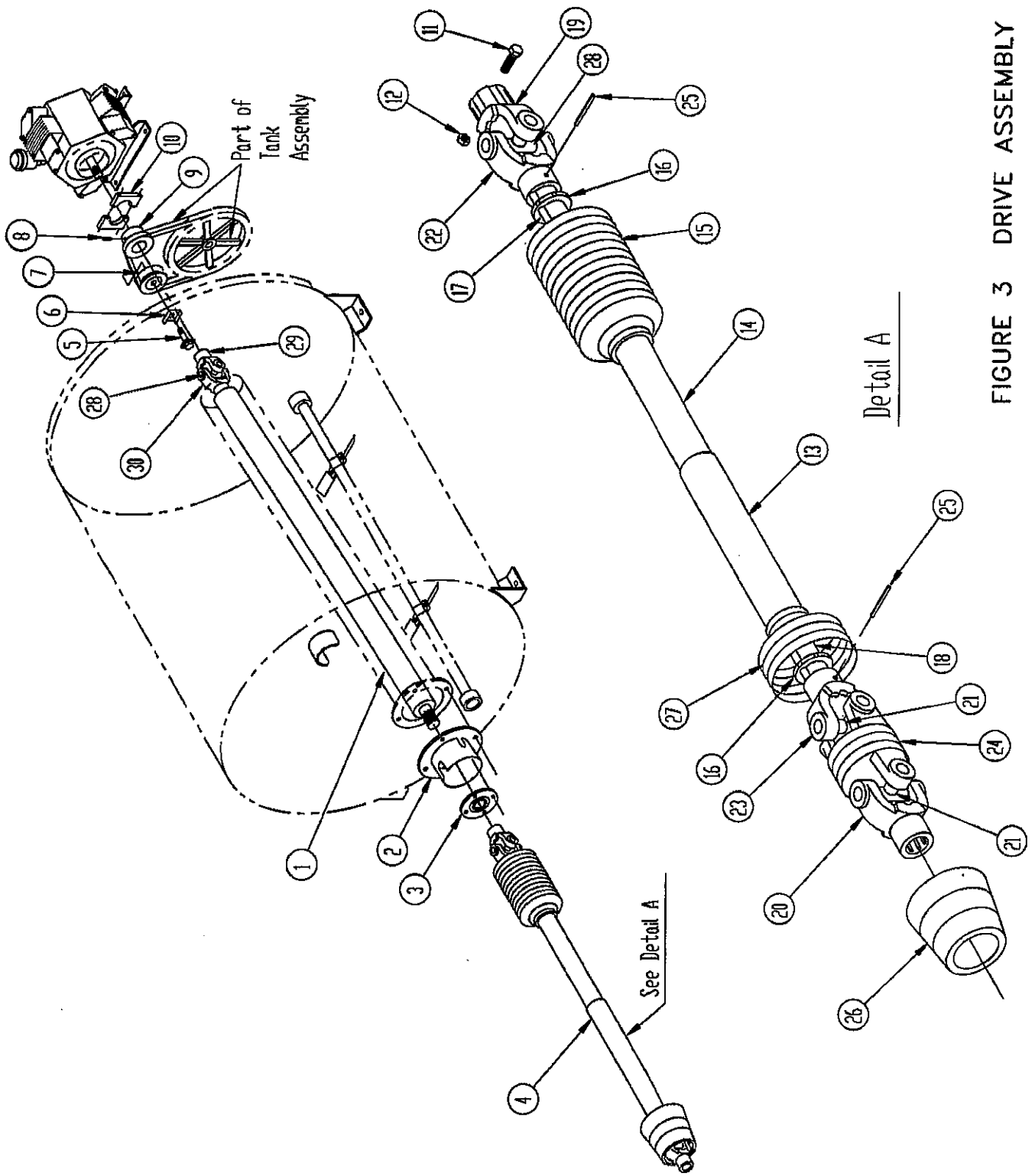


FIGURE 3 DRIVE ASSEMBLY

DRIVE ASSEMBLY

ITEM	PART NO.	QTY	DESCRIPTION
1	6-3211	1	Driveshaft (Silverliner 300)
1A	3-6068	1	Driveshaft (Silverliner 400)
1B	3-6068	1	Driveshaft (Silverliner 500)
2	5-7395	1	Bearing Plate
3	6-3198	1	Bearing
4	6-3210	1	PTO Shaft Complete
5	4-7667	1	Tensioner Bolt
6	4-4156	1	Tensioner Plate
7	3-5614	1	Idler Pulley
7A	3-9974	1	Idler Pulley for outside tensioning (early models)
8	4-3911	1	1/2 UNF x 3/4" Set Screw
9	6-0020	1	Sheave
10	3-6986	1	Bridge Clamp
11	6-3804	1	Bolt
12	6-3805	1	Nut
13	6-3800	1	Outer Shield
14	6-3801	1	Inner Shield
15	6-3802	2	Ribbed Shield
16	3-7000	2	Bearing Ring
17	6-3798	1	Outer Profile
18	6-3797	1	Inner Profile
19	6-3799	1	1 3/8" Clamp Yoke (21 Spline)
20	3-6227	1	1 3/8" Yoke (6 Spline)
21	3-4590	2	Cross and Bearing Kit
22	3-6235	1	Inner Yoke/Outer Profile
23	3-6229	1	Inboard Yoke
24	3-6228	1	Double Yoke
25	3-9733	2	Roll Pin
26	6-2618	1	Shield Cone
27	3-6753	1	Shield Collar
28	3-6988	1	Cross and Bearing Kit
29	6-1305	1	Clamp Yoke
30	3-6985	1	Inboard Yoke

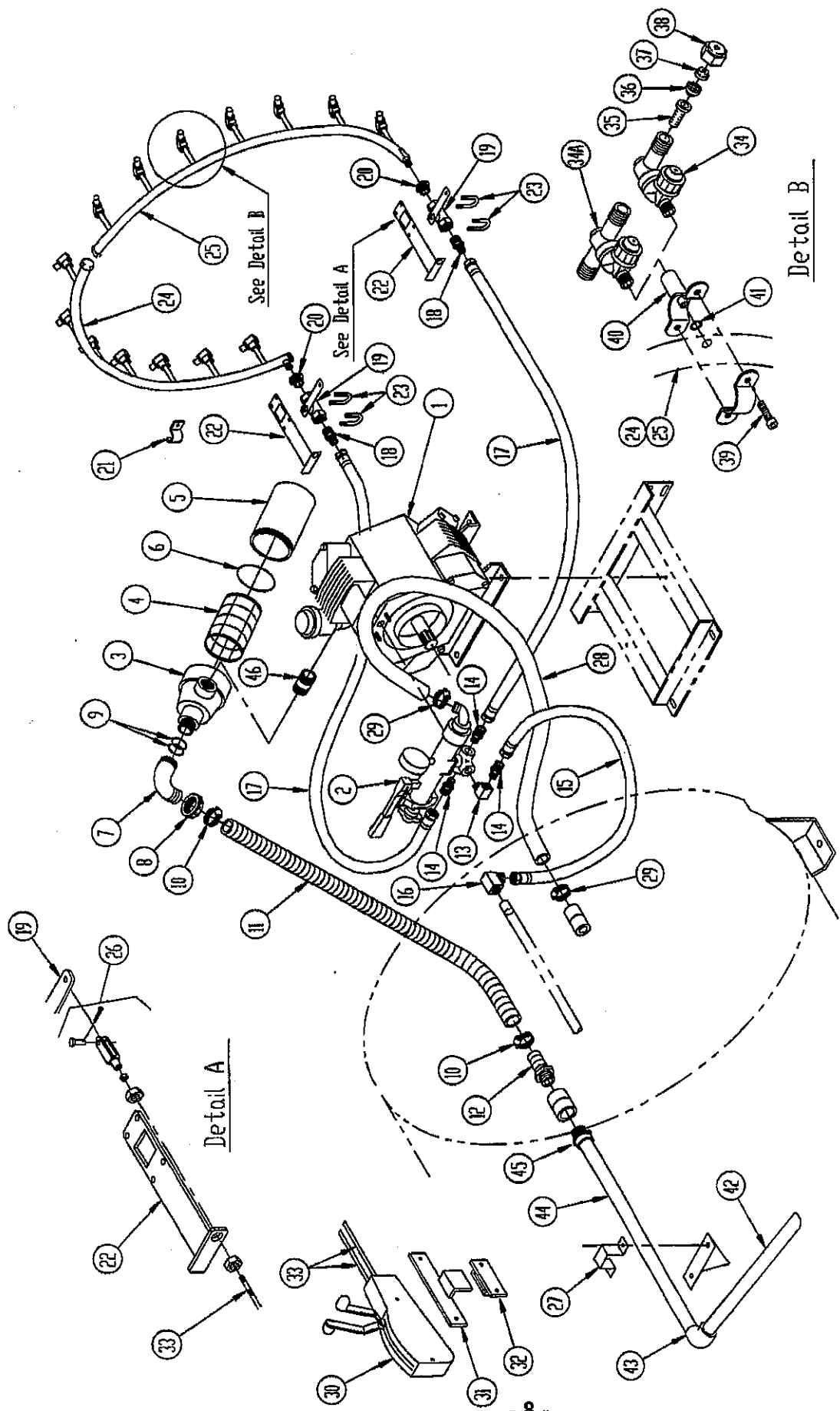
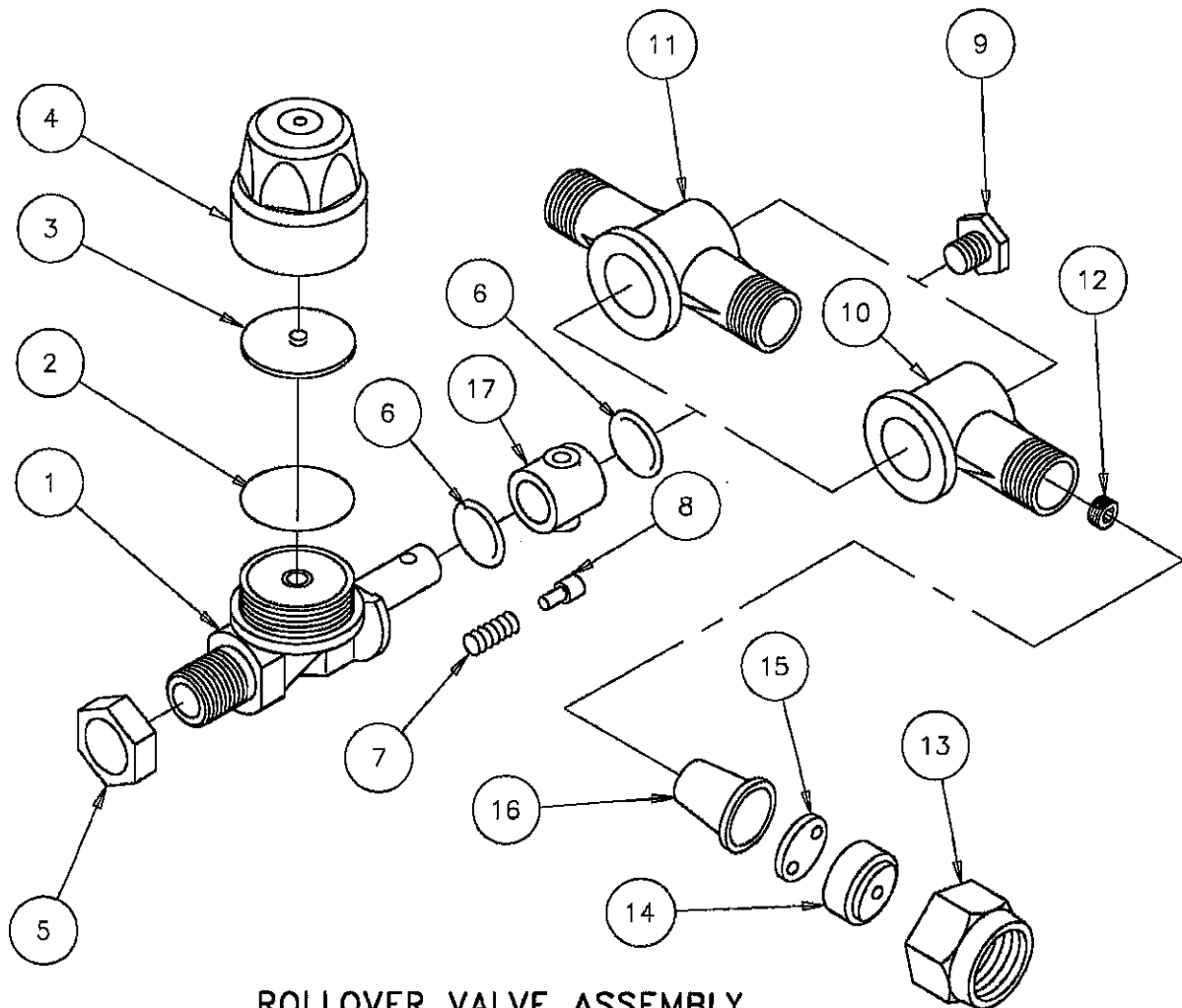


FIGURE 4 PLUMBING ASSEMBLY

PLUMBING ASSEMBLY

ITEM	PART NO.	QTY	DESCRIPTION	ITEM	PART NO.	QTY	DESCRIPTION
1	3-7328	1	PA 908 Pump	31	1-1356	1	Control Bracket
2	3-7418	1	Pressure Regulator	32	1-0663	1	Tractor Mount
3	3-7813	1	Filter Housing	33	1-2250	2	Valve Cable, 16' (300)
4	3-7811	1	Filter Element	33A	3-9333	1	Valve Cable, 19' (400)
5	3-7810	1	Filter Bowl	33B	3-9333	2	Valve Cable, 19' (500)
6	3-7812	1	O-Ring	34	6-3056	14	Single Rollover Valve
7	3-6982	1	90° Hose Tail	34A	6-3057	14	Double Rollover Valve
8	3-6980	1	Flynut	35	3-1644	14	Strainer, 16 Mesh
9	3-6981	2	O-Ring	35A	3-5228	14	Strainer, 25 Mesh
10	1-4975	2	1 1/2" Hose Clamp	36	6-5125	14	DC13 Core
11	3-4356	1	1 1/2" x 16" Hose	36A	1-0832	14	DC25 Core
12	6-3201	1	1 1/2" Hose Barb	36B	1-1302	14	DC45 Core
13	3-4228	1	3/8" x 90° Street Ell	36C	1-1303	14	DC46 Core
14	6-1871	3	1/2" x 3/8" Red. Nipple	37	1-8030	14	D1 Disc
15	5-9174	1	1/2" x 15" Hose Assem.	37A	6-5126	14	D1.5 Disc
16	3-4258	1	1/2" x 90° Street Ell	37B	1-1305	14	D2 Disc
17	5-7500	2	1/2" x 30" Hose Assem.	37C	1-1306	14	D3 Disc
18	6-1886	2	3/4" x 1/2" Red. Nipple	37D	1-1307	14	D4 Disc
19	6-3058	2	3/4" Valve	37E	1-1308	14	D5 Disc
20	3-8705	2	3/4" x 1/2" Hex Reducer	37F	1-4099	14	D6 Disc
21	3-3297	8	Manifold Clamp	37G	1-1309	14	D7 Disc
22	5-6564	2	Valve Cable Bracket	37H	1-1310	14	D8 Disc
23	1-4984	4	U-Bolt	38	1-0830	14	Cap
24	3-7182R	1	Right Manifold	39	6-0902	28	Socket Head Screw
25	3-7182L	1	Left Manifold	40	6-0899	14	Clamp Assembly
26	1-8021	2	Turnbuckle Kit	41	6-0899 6-4695	14	Seal
27	5-7402	1	Suction Pipe Clamp	42	5-7404	1	1 1/2" x 35° x 19" Pipe
28	3-7463	19"	1" Hose Assembly	43	3-6951	1	1 1/2" 90° Ell, PVC
29	1-4016	2	1" Hose Clamp	44	5-7403	1	Suction Pipe, 1 1/2" x 24"
30	1-2200	1	Cable Control Assembly	45	3-1081	1	1 1/2" Male Adapter, PVC
30A	1-4098	1	Control Repair Kit	46	3-4253	1	1 1/4 NPT X 3 Nipple



ROLLOVER VALVE ASSEMBLY

REVISED 4/19/06

ITEM	PT. NO.	QTY	DESCRIPTION	ITEM	PT. NO.	QTY	DESCRIPTION
1	6-3107	1	NOZZLE BODY	9	6-3108	1	SCREW
2	6-3099	1	ORING	10	6-3110	1	SINGLE ROLLOVER BODY
3	6-4817	1	DIAPHRAGM	11	6-3111	1	DOUBLE ROLLOVER BODY
4	6-4818	1	ANTI-DRIP UNIT	12	6-3109		LOCKER-FEEDER
5	6-3106	1	NUT	13	3-1645		CAP
6	6-3100	2	O RING	14	3-1642		DISC D-CER-7
7	6-3102	1	SPRING	15	3-1643		CORE DC45-CER
8	6-3103	1	LOCK PIN	16	3-1644		STRAINER 16 MESH
				17	6-7205	1	SEAL

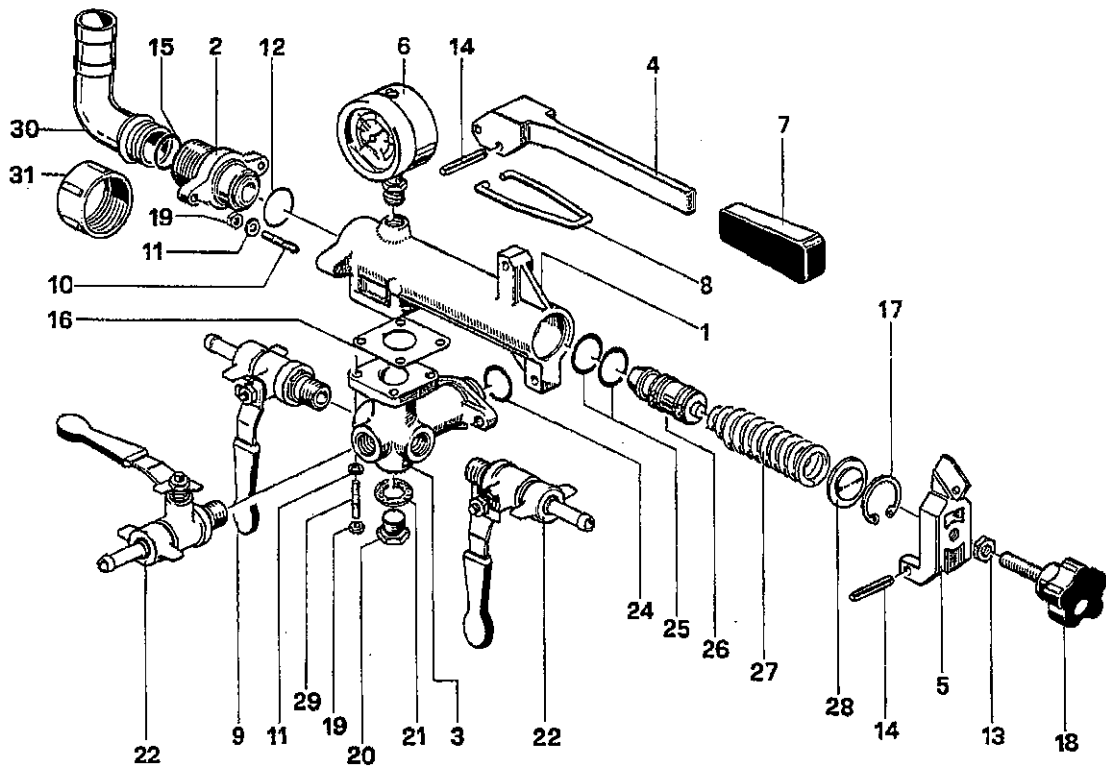


FIGURE 6 PRESSURE REGULATOR (3-7418)

ITEM	PART NO.	QTY	DESCRIPTION
1	3-6707	1	Regulator Body
2	3-6156	1	Seat Body
3	3-6708	1	Manifold
4	3-6709	1	Lever
5	3-6710	1	Bracket
6	3-6661	1	Pressure Gauge
7	3-6712	1	Handle
8	3-6713	1	Bracket
9	6-0325	2	Valve
10	3-6716	2	Stud
11	3-6717	2	Lockwasher
12	6-5034	1	O Ring
13	3-6718	1	Nut
14	3-6063	2	Spring Pin
15	3-6158	1	O Ring
16	3-6159	1	Gasket
17	3-6160	1	Retaining Ring
18	3-6161	1	Knob
19	3-6334	6	Nut
20	3-5667	1	Plug
21	3-6722	1	Gasket
22	3-5672	1	Valve
24	3-6668	1	O Ring
25	3-6163	2	O Ring
26	3-6164	1	Conical Valve
27	3-6165	1	Spring
28	3-6166	1	Seat
29	3-9920	4	Stud
30	3-5747	1	Elbow
31	3-5748	1	Nut

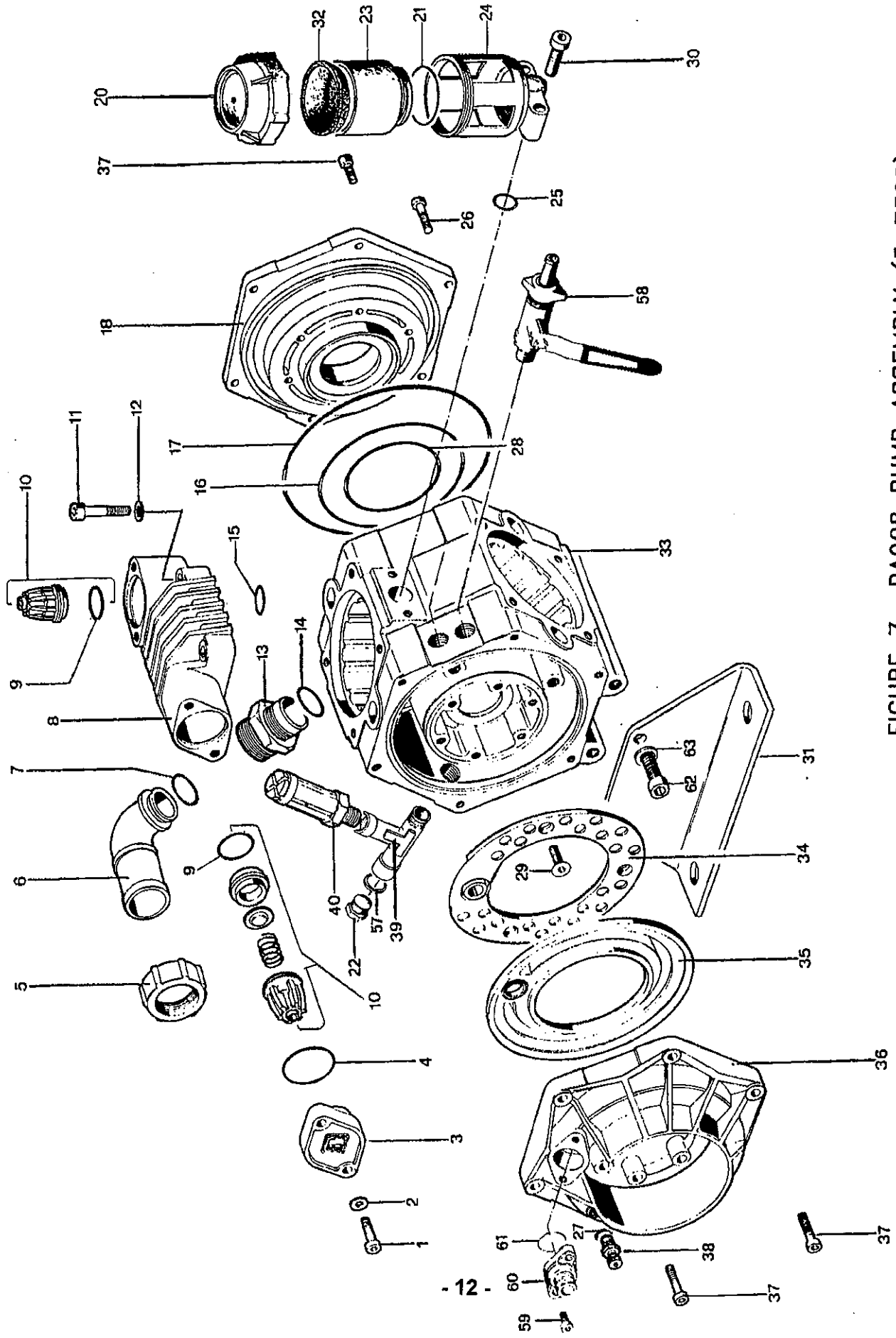


FIGURE 7 PA908 PUMP ASSEMBLY (3-7328)

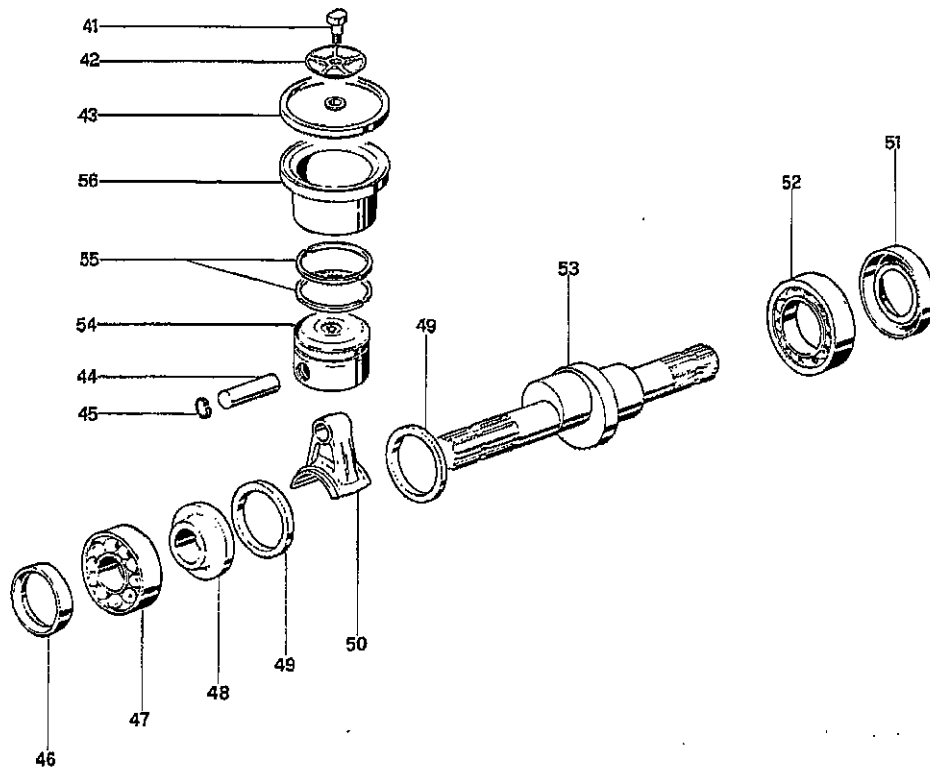


FIGURE 7 PA908 PUMP ASSEMBLY (3-7328)

ITEM	PART NO.	QTY	DESCRIPTION
1	3-6146	12	Bolt
2	3-6145	12	Washer
3	3-6144	6	Valve Cover
4	3-6143	6	O Ring
5	6-5058	1	Nut
6	6-5059	1	Elbow
7	6-5060	1	O Ring
8	3-6139	3	Pump Head
9	6-5036	6	O Ring
10	3-8155	6	Valve Assembly
11	3-6135	12	Bolt
12	3-6137	8	Washer
13	3-6870	1	Fitting
14	6-5061	1	O Ring
15	3-5745	6	O Ring
16	3-6131	1	O Ring
17	3-6130	1	O Ring
18	3-6875	1	Pump Cover
20	3-8142	1	Reservoir Cap
21	3-8145	1	O Ring
22	3-5667	1	Plug
23	3-8144	1	Reservoir Glass
24	3-9737	1	Reservoir Housing
25	3-9738	1	O Ring
26	3-6694	6	Bolt
27	6-5037	1	O Ring
28	3-6132	1	O Ring
29	3-9918	3	Bolt
30	3-9735	2	Bolt
31	3-6132	1	Pump Base
32	3-8142	1	Reservoir Diaphragm

ITEM	PART NO.	QTY	DESCRIPTION
33	3-6889	1	Pump Housing
34	6-5038	1	Diaphragm Support
35	3-8152	1	Accumulator Diaphragm
36	6-5063	1	Pump Cover
37	3-6692	18	Bolt
38	6-5040	1	Air Valve
39	3-8151	1	Tee
40	3-5758	1	Relief Valve
41	6-5041	3	Bolt For Diaphragm
42	6-5042	3	Washer
43	3-5837	3	Diaphragm
44	3-5840	3	Wrist Pin
45	3-5705	3	Retaining Ring
46	3-6147	1	Seal
47	3-6148	4	Bearing
48	3-6149	1	Spacer
49	3-6150	2	Retaining Ring
50	3-6907	3	Connecting Rod
51	6-5043	1	Seal
52	3-6154	1	Bearing
53	3-6910	1	Pump Shaft
54	6-5044	3	Piston
55	3-6912	3	Piston Ring
56	6-5045	3	Piston Sleeve
57	3-6722	1	Gasket
58	3-5672	2	Valve
59	6-5066	2	Screw
60	3-9708	1	Outlet Flange
61	3-6668	1	O Ring
62	6-5064	4	Screw
63	6-5065	4	Washer

16-1998
6-5046

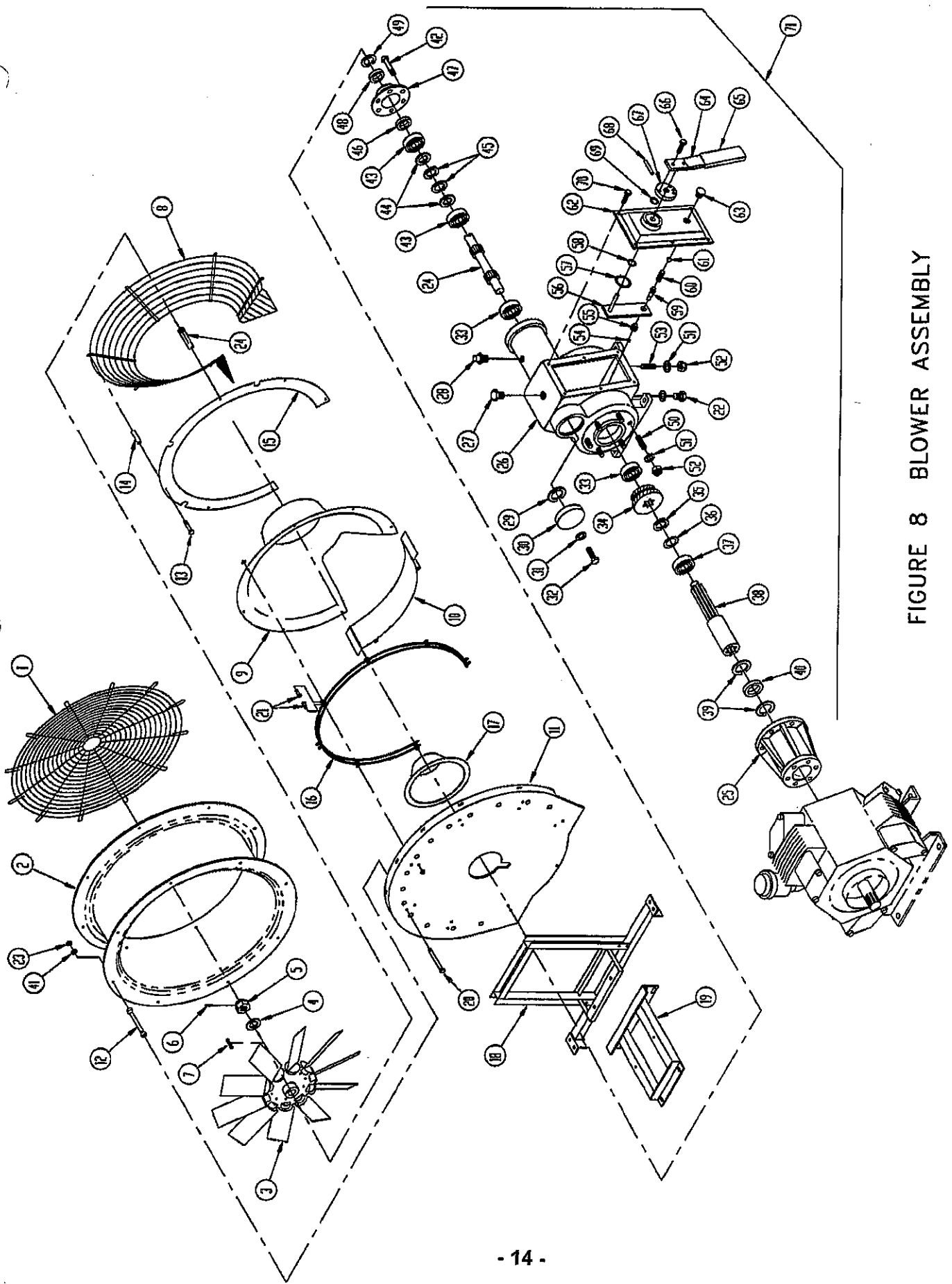


FIGURE 8 BLOWER ASSEMBLY

BLOWER ASSEMBLY

ITEM	PART NO.	QTY	DESCRIPTION	ITEM	PART NO.	QTY	DESCRIPTION
1	3-3293	1	Fan Guard	36	3-6541	1	Washer
2	3-3294	1	Blower Housing	37	3-6536	1	Bearing
3	6-3176	1	12 Blade Fan	38	3-6537	1	Input Shaft
3A	6-5032	12	Fan Blade	39	3-6534	2	Retaining Ring
4	3-3338	1	Washer	40	3-6535	1	Seal
5	3-3336	1	Nut	41	6-4315	5	Shaped Washer
6	3-3335	1	Cotter Key	42	6-5009	6	Bolt
7	3-6528	1	Key	43	3-6523	2	Bearing
8	6-4310	1	Safety Guard	44	3-6556	2	Spacer
9	6-4316	1	Cut Diffuser Cone	45	3-6555	2	Retaining Ring
10	6-4309	1	Bottom Deflector	46	3-6522	1	Seal
11	8-2768	1	Blower Backplate	47	3-9342	1	Cover
12	6-4314	3	Spacer Tube	48	3-9343	1	Seal
13	6-5005	6	Bolt	49	3-9344	1	Retaining Ring
14	6-4313	6	Spacer	50	3-6557	6	Stud
15	6-4312	1	Galvanized Ring	51	6-5010	10	Washer
16	6-4311	1	Safety Guard	52	6-5011	10	Locknut
17	6-4317	1	Small Plastic Cone	53	6-5012	4	Stud
18	3-9347	1	Support Frame	54	3-3325	1	Retaining Ring
19	5-8279	1	Pump Support	55	3-3346	1	Tempered Cube
20	6-5021	5	Bolt	56	3-7021 6-7021	1	Internal Shifter
21	6-5006	14	Bolt	57	3-3342	1	Washer
22	3-3315	1	Drain Plug	58	6-5013	1	O Ring
23	3-6074	5	Locknut	59	6-5014	1	Support Pin
24	3-6524	1	Pinion Shaft	60	3-3331	1	Spring <i>New #6-8846</i>
25	5-7365	1	Pump Adapter	61	3-3328	1	Ball <i>New #6-8847</i>
26	3-6533	1	Gearbox Housing	62	6-5016	1	Cover
27	3-3317	1	Oil Fill Plug	63	3-3329	1	Sight Gauge
28	3-3318	1	Vent Plug	64	6-5015	1	Shifter Lever
29	3-3306	1	Retaining Ring	65	6-5016	1	Shifter Lever Cover
30	6-5007	1	Rubber Plug	66	3-7403	1	Bolt
31	6-5008	1	Flatwasher	67	6-5018	1	Lever Support
32	6-0902	1	Bolt	68	3-3333	1	Roll Pin
33	3-3307	2	Bearing	69	6-5019	1	O Ring
34	3-6525	1	Gear	70	6-5009	6	Bolt
35	3-6542	1	Retaining Ring	71	3-7414	1	Gearbox Complete

**CONTACT LOCAL DEALER WITH
PARTS ORDERING INFORMATION**

- 1. Model of Sprayer**
- 2. Part Number**
- 3. Description of Part**
- 4. Quantity Needed**

**OR CALL THE NUMBERS LISTED BELOW FOR THE
DEALER NEAREST YOU**

1-800-241-2308

1-706-882-8161



DURAND-WAYLAND, INC.

P.O. Box 1404

101 Durand Road

LaGrange, Georgia USA 30241-1404

TEL 706 882-8161

800 241-2308

FAX 706 882-0052

e-mail sales@durand-wayland.com